

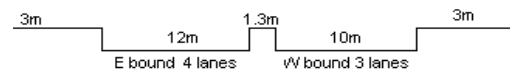
YEAR 2014

COVERAGE (B) STATION 4217

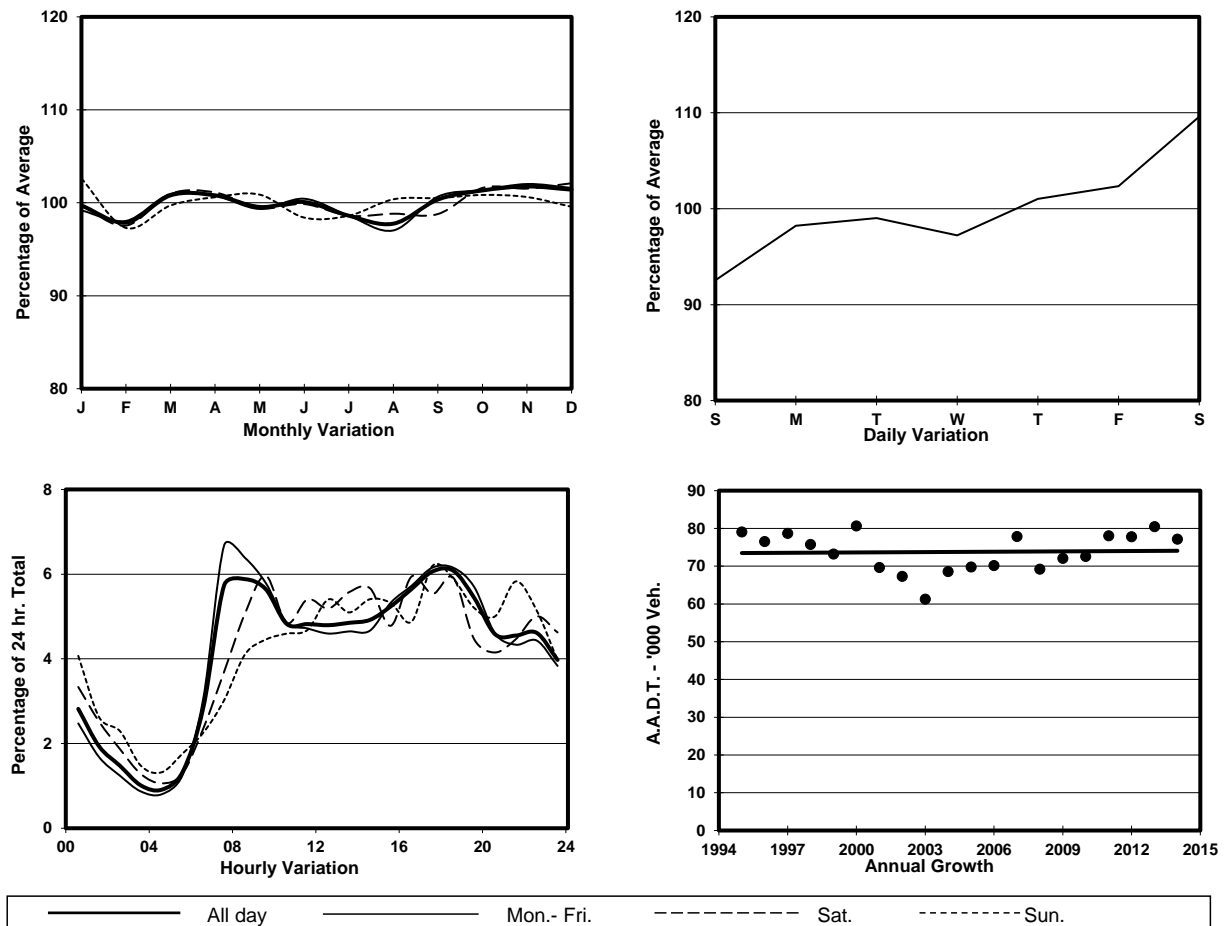
ROAD NETWORK MAJOR

ROAD TYPE PRIMARY DISTRIBUTOR

LINK CLEAR WATER BAY RD (from LUNG CHEUNG RD to  
NEW CLEAR WATER BAY RD WESTERN JUNCTION)



## 1. TRAFFIC FLOW VARIATION AND GROWTH



## 2. TRAFFIC CHARACTERISTICS (BY DIRECTION)

Parameter	All - Day	Mon. - Fri.	Sat.	Sun.
<b>EAST BOUND</b>				
A.A.D.T.	42570	42430	46770	40340
R 12 / 24 - %	61.5	62.4	60.9	57.3
R 16 / 24 - %	83	84.2	80.7	79.2
AM Peak Hour	0900-1000	0700-0800	0900-1000	0800-0900
One-way flow at AM peak hour	2180	2460	2510	1580
T - % (AM)	-	12	-	-
PM Peak Hour	1800-1900	1800-1900	1800-1900	1700-1800
One-way flow at PM peak hour	2760	2830	2730	2670
T - % (PM)	-	5.7	-	-
Prop.of commercial vehicles - 16 hr.	-	9.5	-	-
<b>WEST BOUND</b>				
A.A.D.T.	34580	34700	38150	31360
R 12 / 24 - %	68.2	69.7	66.8	61.4
R 16 / 24 - %	84.6	85.5	82.8	81.6
AM Peak Hour	0800-0900	0700-0800	0900-1000	0900-1000
One-way flow at AM peak hour	2380	2690	2550	1640
T - % (AM)	-	9.6	-	-
PM Peak Hour	1700-1800	1700-1800	1700-1800	1700-1800
One-way flow at PM peak hour	2190	2250	2360	1780
T - % (PM)	-	8	-	-
Prop.of commercial vehicles - 16 hr.	-	8.4	-	-

## 3. OTHER INFORMATION AND COMMENT

**4. Vehicle classification and occupancy - Monday to Friday**

Time		Class of vehicle									
		Motor	Private	Taxi	Private	PLB	Goods veh.		Non	Fr. Bus	
		Cycle	Car		LB		Light	M & H	Fr. Bus	SD	DD
0700-0800 Peak hour	Pro	4.0	40.2	16.9	4.2	14.3	9.9	3.7	3.4	0.1	3.4
	Ocp	1.0	1.5	2.1	5.8	11.9	1.6	1.1	17.9	15.0	43.8
0800-0900	Pro	5.7	48.2	13.1	2.3	10.9	12.1	2.6	2.5	0.1	2.5
	Ocp	1.0	1.4	2.1	6.5	13.0	1.8	1.4	12.0	16.7	41.2
0900-1000	Pro	4.3	40.6	15.7	2.4	11.4	14.9	5.1	2.4	0.0	3.2
	Ocp	1.0	1.4	1.9	3.1	13.1	1.6	1.4	10.5	0.0	22.7
1000-1100	Pro	3.0	39.9	18.1	1.0	12.2	15.2	5.8	1.0	0.1	3.8
	Ocp	1.0	1.5	1.8	3.0	11.5	1.5	1.3	7.0	9.3	22.2
1100-1200	Pro	3.4	36.9	18.9	2.4	10.6	17.5	4.5	2.0	0.1	3.7
	Ocp	1.1	1.4	1.8	2.4	10.7	1.6	1.1	4.3	8.5	20.7
1200-1300	Pro	3.2	40.1	16.8	4.1	11.2	15.3	4.8	1.1	0.0	3.5
	Ocp	1.1	1.5	2.0	6.2	9.3	1.5	1.4	8.4	0.0	20.1
1300-1400	Pro	3.9	32.5	17.2	2.5	9.7	20.6	7.1	2.4	0.1	4.0
	Ocp	1.1	1.4	2.0	2.5	9.9	1.5	1.3	4.9	13.0	20.8
1400-1500	Pro	3.3	37.8	19.1	2.0	8.3	17.5	6.4	1.3	0.1	4.1
	Ocp	1.0	1.4	1.7	1.5	10.8	1.5	1.3	5.1	18.5	19.5
1500-1600	Pro	3.0	36.6	20.4	4.0	9.0	14.8	4.5	4.2	0.1	3.5
	Ocp	1.2	1.7	2.0	7.2	11.5	1.5	1.1	20.5	2.0	24.1
1600-1700	Pro	3.7	41.0	16.7	3.5	9.1	14.0	4.4	4.5	0.1	3.1
	Ocp	1.1	1.6	1.8	4.2	13.5	1.5	1.1	10.7	4.0	30.5
1700-1800	Pro	5.6	38.7	16.8	3.5	11.2	15.7	2.8	2.5	0.1	3.1
	Ocp	1.0	1.4	2.1	4.2	13.7	1.6	1.1	3.6	16.5	42.6
1800-1900	Pro	7.0	48.5	19.8	0.6	9.7	9.1	1.4	1.0	0.0	3.0
	Ocp	1.1	1.4	2.2	2.0	13.7	1.5	1.2	18.4	0.0	46.6
1900-2000	Pro	3.1	56.9	14.0	0.0	12.6	7.1	2.3	0.6	0.1	3.3
	Ocp	1.2	1.4	2.1	0.0	11.2	1.5	1.3	9.2	19.5	31.3
2000-2100	Pro	4.5	45.0	25.7	0.1	14.2	5.6	0.7	0.5	0.1	3.6
	Ocp	1.1	1.6	1.9	8.0	9.6	1.8	1.3	2.8	8.0	23.1
2100-2200	Pro	3.2	43.4	25.9	0.4	15.2	6.3	0.7	0.9	0.1	3.9
	Ocp	1.0	1.4	2.0	2.7	8.9	1.5	1.0	1.0	9.0	22.2
2200-2300	Pro	3.8	44.6	32.5	0.3	11.4	3.0	0.7	0.1	0.1	3.5
	Ocp	1.1	1.6	1.9	3.0	10.3	1.4	1.0	1.0	5.0	20.3
16 hours	Pro	4.2	42.4	18.7	2.1	11.3	12.3	3.5	2.0	0.1	3.4
	Ocp	1.1	1.5	2.0	4.7	11.5	1.6	1.2	11.3	11.0	28.7

**Legend**

**Pro.** Proportion of vehicles in % (Sum may not add up to 100% due to figure rounding)  
**Ocp.** Average occupancy of vehicles  
**M&H** Medium and Heavy